



*Saves Your Energy*

## PRODUCT CARD

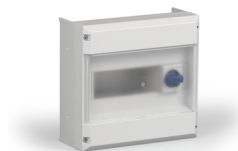
13.9.2012

# CUBELO11KS25

Name: **Small modular enclosure**  
For 11 modules, incl. 25 A switch, PC  
Type: CUBELO11KS25  
EAN: 6418677181528

Description: Cubelo 11KS25 is a small enclosure for 11 modules. It is designed for use as a small panel in dry areas, and for creating larger panel assemblies. The enclosure has a hatch and a 25 A load break switch as a standard. It is suitable for both surface and flush mounting.

Package: 1  
Unit: PCS



### Technical specification

Colour: RAL 7035  
Content: Enclosure base, cover, cover screws, transparent hatch, DIN rail, flange (1 pc), wiring plugs for flush mounting, a set of 12 pcs, cover plate for 6 modules, N/PE-busbars 2 x (3 x 16 mm<sup>2</sup>, 9 x 6 mm<sup>2</sup>), marker, pre-mounted 25 A load break switch  
Material, base: Polycarbonate  
Material, cover: Polycarbonate  
Material, cover screws: Polyamide  
Material, gasket: Polyurethane  
Volume cm<sup>3</sup>: 442,89  
Weight (kg): 0,923

Ensto Finland Oy

Ensio Miettisen katu 2  
P.O.Box 77  
06101 Porvoo, Finland

Tel. +358 204 76 21  
Fax +358 204 76 2516

[www.ensto.com](http://www.ensto.com)