

Unscreened Category 6 RJ45 Patch Panel

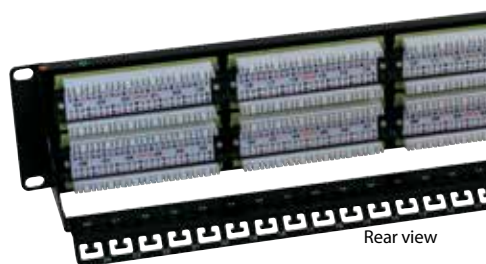
24
Ports

48
Ports



Front view

24 port patch panel



Rear view

48 port patch panel

OptronicPlus Unscreened category 6 patch panels range exceed the transmission line performance requirements of IEC and TIA for class E/category 6 systems. The products are designed for mechanical and electrical reliability, using quality materials and processes, to deliver a panel solution which delivers a consistent

high level of systems performance. Each category 6 patch panel complies with the requirements of ISO/IEC 11801 (2nd Edition): 2010 and support all applications designed for class E/category 6 applications including ATM 1200, 1000BASE-T (Gigabit Ethernet) and 1G FCBASE-T.

Features

- > 19" rack mountable
- > 6 - port RJ45 modules
- > Universal wiring blocks for easy termination
- > Colour coded wiring blocks for easy cable lacing
- > Integral label feature
- > Individual port identification
- > Rear cable management bar
- > Durability:
 - Socket Contacts: 750 plug insertion cycles minimum
 - Wiring block: 25 termination cycles minimum
- > Earthing kit and cage nuts included as standard
- > Part of the 25 year Optronic systems warranty programme

Applications

- > Class E/category 6 standards compliant
- > Terminates 22AWG to 26AWG cables

Conformance

- > Electrically compliant beyond 250MHz
- > Supports TIA 568 A & B wiring configurations
- > REACH / SvHC compliant regulation (EC) No. 1907/2006

Ordering Information

DESCRIPTION	PART NUMBER
Unscreened category 6 RJ45 patch panel, 24 port Black 1U	600-001
Unscreened category 6 RJ45 patch panel, 48 port Black 2U	600-002