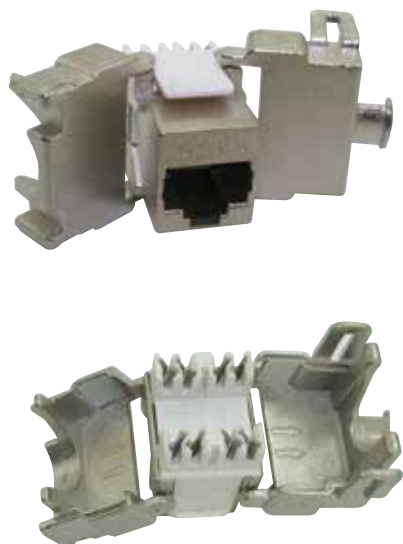


## Category 6 STP Keystone Jack



Representative image of a loaded angled module with a category 6 UTP keystone jack (please note angled module is sold separately).



Category 6 Shielded Twisted Pair (STP) keystone jacks conform to class E performance. They follow the industry standard RJ45

footprint and due to the small form design they are perfect for high density applications.

## Technical Specifications

MECHANICAL	VALUE
Housing Material	PC UL94V-0
Shielding Material	Brass 0.30mm + Nickel Plating
Insert Material	Flame retardancy ABS UL94V-0
IDC Material	Phosphor Bronze Stamp Pin 0.35mm
Contact Material	Phosphor Bronze + Gold Plating 0.50mm
RJ45 Jack Life	Min 750 Insertions
IDC Life	Min 250 Terminations

## Features

- > Small form RJ45 footprint design
- > 90° termination
- > High performance
- > Fully shielded for EMI protection
- > Wiring diagram and conductor cap supplied
- > 110 style IDC punch down

## Applications

- > Supports category 6 (class E) networks running up to 250 MHz applications
- > Ideal for high density installations
- > Ideal for environments sensitive to EMI
- > Backwards compatible with category 5e distribution systems

## Conformance

- > Category 6
- > ISO/IEC 11801 : 2002
- > ANSI/EIA/TIA 568B.2 : 2002
- > RoHS
- > UL approved

## Ordering Information

DESCRIPTION	PART NUMBER
Category 6 Shielded Twisted Pair (STP) keystone jack UL approved	CAT6+JACK180STP