

Technical Specifications

System

- CPU: TI DM368 SoC
- Flash: 128MB
- RAM: 256MB
- Embedded OS: Linux 2.6

Pan/Tilt/Zoom

- Pan range: 360° continuous rotation
- Tilt range: 0° ~ 90° flip
- 20x optical zoom
- Pan speed: 0.1° ~ 300°/sec
- Tilt speed: 0.1° ~ 120°/sec
- Auto pan mode
- Auto patrol mode

Lens

- 20x optical zoom lens, f = 4.7 ~ 94 mm, F1.6 (wide), F3.5 (tele), auto focus, auto-iris, focus range: 10 mm (wide) ~ 800 mm (tele) to infinity
- Removable IR-cut filter for day & night function

Angle of View

- 4.7 ~ 94° (horizontal)

Shutter Time

- 1/1 sec. to 1/10,000 sec.

Image Sensor

- 1/3" SONY CMOS Sensor in 1920x1080 resolution

Minimum Illumination

- 2.52 Lux @ F1.6 (1/30s)
- 0.4 Lux @ F1.6 (1/4s)
- 0.01 Lux @ F1.6 (1s)

Video

- Compression: H.264, MJPEG & MPEG-4
- Streaming:
 - Multiple simultaneous streams
 - H.264 streaming over UDP, TCP, HTTP or HTTPS
 - MPEG-4 streaming over UDP, TCP, HTTP or HTTPS
 - H.264/MPEG-4 multicast streaming
 - MJPEG streaming over HTTP or HTTPS
- Supports activity adaptive streaming for dynamic frame rate control
- Supports 3GPP mobile surveillance
- Frame rates:
 - H.264:
 - Up to 60 fps at 1280x720
 - Up to 30 fps at 1920x1080
 - MPEG-4:
 - Up to 60 fps at 1280x720
 - Up to 30 fps at 1920x1080
 - MJPEG:
 - Up to 60 fps at 1280x720
 - Up to 30 fps at 1920x1080
 - (Up to 30/15 fps in WDR mode)

Image Settings

- Adjustable image size, quality and bit rate
- Time stamp and text caption overlay
- Flip & mirror
- Configurable brightness, contrast, saturation, sharpness, white balance and exposure
- AGC, AWB, AES
- WDR Pro
- Automatic, manual or scheduled day/night mode
- BLC (Backlight Compensation)
- Supports privacy masks

Audio

- Compression:
 - GSM-AMR speech encoding, bit rate: 4.75 kbps to 12.2 kbps
 - MPEG-4 AAC audio encoding, bit rate: 16 kbps to 128 kbps
 - G.711 audio encoding, bit rate: 64 kbps, µ-Law or A-Law mode selectable.
- Interface:
 - External microphone input
 - Audio output
 - Supports two-way audio
 - Supports audio mute

Networking

- 10/100 Mbps Ethernet, RJ-45
- Onvif support
- Protocols:
 - IPv4, IPv6, TCP/IP, HTTP, HTTPS, UPnP, RTSP/RTP/RTCP, IGMP, SMTP, FTP, DHCP, NTP, DNS, DDNS, PPPoE, CoS, QoS, SNMP, and 802.1X

Alarm and Event Management

- Triple-window video motion detection
- Audio detection
- Three D/I and two D/O for external sensor and alarm
- Event notification using HTTP, SMTP or FTP
- Local recording of MP4 file

On-board Storage

- SD/SDHC card slot
- Stores snapshots and video clips

Security

- Multi-level user access with password protection
- IP address filtering
- HTTPS encrypted data transmission
- 802.1X port-based authentication for network protection

Users

- Live viewing for up to 10 clients

Weight

- Net: 3,400 g

LED Indicator

- System power and status indicator
- System activity and network link indicator

Power

- 24V AC
- Power consumption: Max. 60 W
- 802.3at compliance PoE plus

Housing

- Weather-proof IP66-rated housing

Approvals

- CE, LVD, FCC, VCCI, C-Tick

Operating Environments

- Temperature: -40°C ~ 55°C (AC 24V)
- Temperature: -10°C ~ 55°C (PoE Plus)

Viewing System Requirements

- OS: Microsoft Windows 7/Vista/XP/2000
- Browser: Mozilla Firefox, Internet Explorer 6.x or above
- Cell phone: 3GPP player
- Real Player: 10.5 or above
- Quick Time: 6.5 or above

Installation, Management, and Maintenance

- Installation Wizard 2
- 32-CH ST7501 recording software
- Supports firmware upgrade

Applications

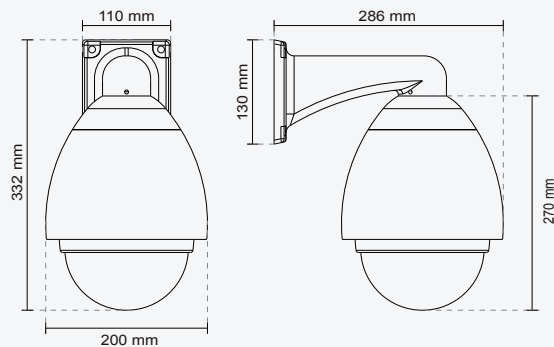
- SDK available for application development and system integration

Warranty

- 36 months

Dimension

- Camera: Ø 200 mm x 270 mm
- Cable length: 1330 mm
- Cable diameter: Ø 15 mm; Max width: Ø 20 mm



All specifications are subject to change without notice. Copyright©2011 VIVOTEK INC. All rights reserved. P/N:

SUPREME
A NEW DEFINITION OF HD



Speed Dome Network Camera SD8362E

20x Zoom • 2MP • Full HD • WDR • Extreme
Weatherproofing • 60 fps • PoE Plus



VIVOTEK SD8362E is part of the SUPREME series product line offering 2-Megapixel or 1080p resolution with superb image quality. Adopting 20x optical zoom lens, the SD8362E is able to capture details at top-notch quality.

The IP66-rated housing protects the camera body against rain and dust and the wide temperature range (-40°C ~ 55°C) ensures operation under extreme weather conditions. It is especially suitable for monitoring wide open indoor/outdoor spaces such as airports, highways and parking lots where high-level reliability and precision are always required.

The SD8362E supports high-performance H.264/MPEG-4/MJPEG compression technology and offers extra smooth video quality with resolution up to 60 fps @ 720p and 30 fps @ 1080p. Boasting WDR technology, the SD8362E can also cope with challenging lighting conditions and generate image quality similar to the capabilities of the human eye. With sophisticated pan/tilt mechanism, the camera provides fast, precise movement with continuous 360-degree pan and 90-degree tilt. Users can easily control the lens position via a mouse or a joystick to track the object of interest and set up to 128 preset positions for patrolling.

As with all VIVOTEK true day/night cameras, the SD8362E features a removable IR-cut filter, maintaining clear images 24 hours a day. Audio detection is another new feature newly available on the SD8362E. By recognizing increases or decreases in sound volume, an additional layer of intrusion detection is ensured. With other advanced features such as SD/SDHC card slot, 802.3at compliant PoE Plus, and 60 fps high quality video, the SD8362E is the best choice for the most demanding outdoor surveillance applications.



VIVOTEK INC.

6F, No.192, Lien-Cheng Rd., Chung-Ho, New Taipei City, 235, Taiwan, R.O.C.
| T: +886-2-82455282 | F: +886-2-82455532 | E: sales@vivotek.com

VIVOTEK USA, INC.

470 Lakeside Drive Suite C, Sunnyvale, CA 94085 USA
| T: 408-773-8686 | F: 408-773-8298 | E: salesusa@vivotek.com

Ver 1.1

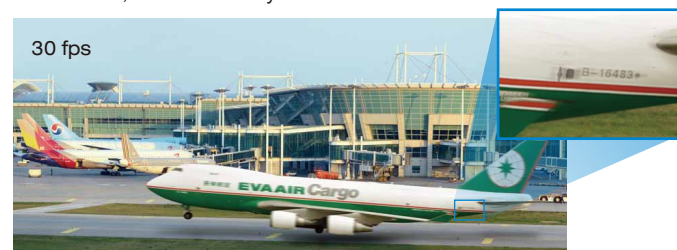


30/60 fps for Smoother, Razor-Sharp Video of High-Speed Objects

The VIVOTEK SD8362E is able to transmit 30 fps @ 1080p resolution and 60 fps @ 720p with H.264 compression, whereas a conventional megapixel camera can generally only achieve 10 to 15 fps due to hardware limitations. The ability to view and record footage at an exceptional frame rate provides a more complete record of an event and more opportunity to reliably identify a target.

The frame rate of a conventional speed dome is often not high enough to match its pan/tilt speed, resulting in an image that is out of focus or blurred, especially when the speed dome turns a full 180° in the opposite direction.

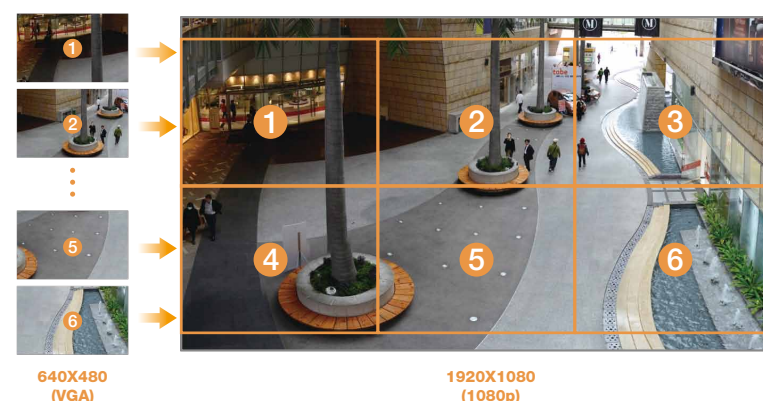
With an exceptional 30/60 fps frame rate, a user can clearly see that both the SD8362E pan/tilt movement as well as object movements are unbelievably smooth with no flickering or motion blur, remaining focused on all of the important elements in the scene, even as they are in motion.



SD8362E pan & tilt mechanism runs 40% faster than previous generation speed domes. When combined with 60 fps video, users are assured clear, usable video with no ghosting or motion blur.

Wide Coverage, Exceptional Details

Compatible with the HDTV (16:9) full HD standard, the SD8362E provides surveillance coverage for an area up to six times larger than possible with a VGA camera, significantly reducing the number of cameras required. The SD8362E is especially well suited to monitor broad spaces such as traffic intersection, airport terminals, and building entrance, etc. In addition, it is excellent for applications requiring accurate recognition for post-content analysis, such as the identification of people or license plates.



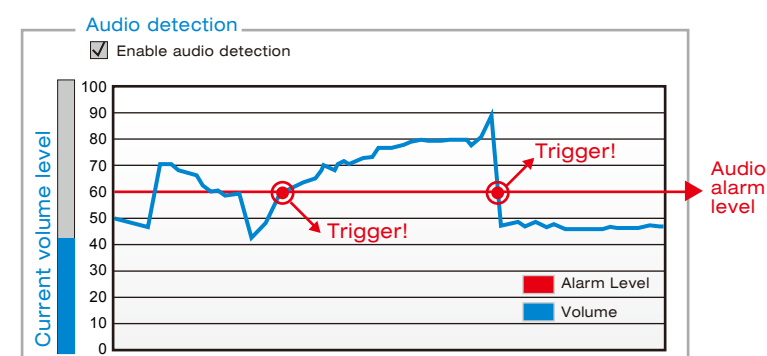
Remarkably Close-up Images of Distant Objects

Utilizing a 20x optical zoom lens, the SD8362E can provide close-up images with exceptional details and effectively extends your viewing distance. You can easily and quickly zoom in on distant objects or minute targets with unprecedented precision and quality, even when enlarged.



Audio Detection for Instant Alert

The audio detection feature enables an event trigger when a sudden, unexpected increase or decrease in sound volume occurs so as to alert users of a possible emergency situation.

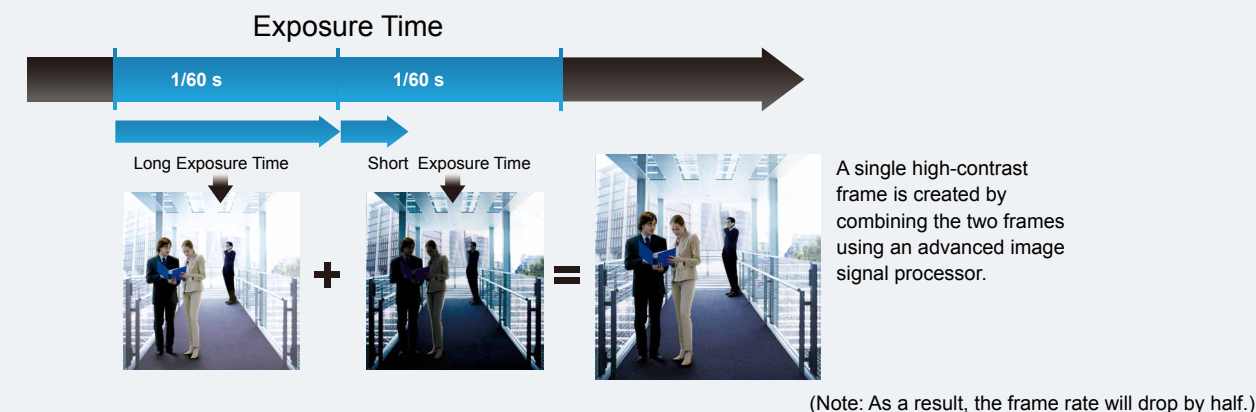


Unparalleled Visibility in High Contrast Environments

When a camera is used in a high contrast, backlight, glare, or light reflective environment such as a building entrance, ATM, or window, a subject may appear dark and unrecognizable. WDR (Wide Dynamic Range) technology compensates for the unbalanced lighting, restoring the details throughout the field of view, so as to cope with all challenging light conditions.

• WDR Pro

WDR Pro works by capturing alternate frames using different exposure times. An image signal processor (ISP) then uses a sophisticated algorithm to seamlessly combine the optimal portions of these two complementary frames to create a composite frame that retains detail in both dark and bright areas of the field of view.



Extreme Weatherproofing

• Wide Temperature Range

The wide temperature range (-40 °C~55 °C) enhances the SD8362E's performance and reliability under extremely harsh weather conditions.



• IP66-rated Housing

The weather-proof IP66-rated housing provides protection from dust and moisture, allowing the SD8362E to operate outdoors without any worries.



SD8362E Speed Dome Network Camera

20x Zoom • 2MP • Full HD • WDR • Extreme Weatherproofing • 60 fps • PoE Plus

- Full HD SONY CMOS Sensor
- Up to 60 fps @ 720p HD; Up to 30 fps @ 1080p Full HD
- 20x Zoom Lens
- Removable IR-cut Filter for Day & Night Function
- 360° Continuous Pan and 90° Tilt
- Real-time H.264, MPEG-4 and MJPEG Compression (Triple Codec)
- WDR Technology for Unparalleled Visibility in High Contrast Environments
- Weather-proof IP66-rated Housing
- -40°C ~ 55°C Wide Temperature Range for Extreme Weather Conditions
- Audio Detection for Instant Alert
- Built-in 802.3at Compliant PoE Plus
- 3D Privacy Masks for Private Area Protection
- Built-in SD/SDHC Card Slot for On-board Storage



ONVIF