

VS8102

1-CH Video Server

H.264 • PoE • SD/SDHC Card



VIVOTEK VS8102 is a 1-CH video server supporting the high-performance H.264 compression format that drastically reduces file sizes and conserves valuable bandwidth and storage space. With MPEG-4 and MJPEG compatibility, video streams also can be transmitted in either of these formats for versatile applications. The streams can also be individually configured with separate frame rates, resolution, and image quality so as to meet different needs or bandwidth constraints. Users can receive multiple streams simultaneously in different settings for viewing on different platforms such as PCs or mobile phones.

The integrated 802.3af compliant PoE function reduces cabling problems, making the VS8102 a cost-effective surveillance solution. The built-in SD/SDHC card slot offers a convenient and portable storage option to prevent data loss in case of network disconnection. Since all data can be stored on a SD/SDHC card, the on-board storage design significantly reduces bandwidth consumption.

The VS8102 comes with VIVOTEK's ST7501 32-CH central management software for high scalability and easy-to-use operation. With the VS8102, you can upgrade to a full-featured, high-end IP surveillance solution using existing infrastructure.

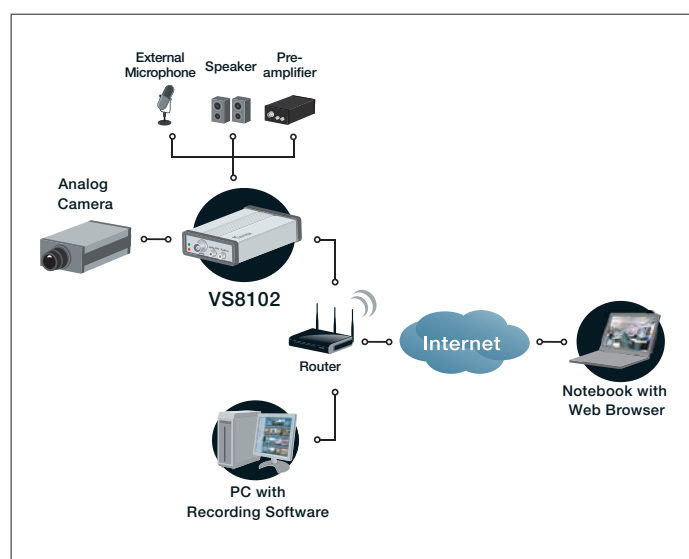
Features

- > Up to 30 fps in D1 Resolution
- > Real-time H.264, MPEG-4, and MJPEG Compression (Triple Codec)
- > Multiple Streams Simultaneously
- > Activity Adaptive Streaming for Dynamic Frame Rate Control
- > Built-in 802.3af Compliant PoE
- > Two-way Audio via SIP Protocol
- > HTTPS Encrypted Data Transmission
- > 802.1X Port-based Authentication for Network Protection
- > Digital I/O for External Sensor and Alarm
- > RS-485 Interface for Scanners, Pan/Tilts
- > Built-in SD/SDHC Card Slot for On-board Storage

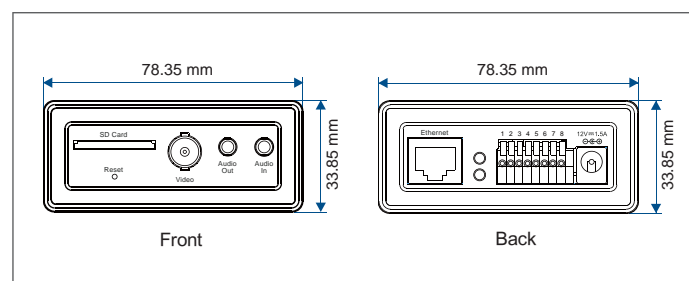
System	<ul style="list-style-type: none"> CPU: TI DM365 SoC Flash: 128MB RAM: 128MB Embedded OS: Linux 2.6
Camera Control	<ul style="list-style-type: none"> PTZ camera control through RS-485 Supported devices and protocols: DynaDome / SmartDome Pelco D LiLin Pelco P Samsung scc643 and customized types Supports CGI command serial driver
Video	<ul style="list-style-type: none"> Compression: H.264, MJPEG & MPEG-4 Streaming: <ul style="list-style-type: none"> Simultaneous multiple streams H.264 streaming over UDP, TCP, HTTP or HTTPS MPEG-4 streaming over UDP, TCP, HTTP or HTTPS MPEG-4 multicast streaming MJPEG streaming over HTTP or HTTPS Supports activity adaptive streaming for dynamic frame rate control Frame rates: <ul style="list-style-type: none"> H.264: Up to 30/25 fps at 720 x 480 (NTSC) / 720 x 576 (PAL) MPEG-4: Up to 30/25 fps at 720 x 480 (NTSC) / 720 x 576 (PAL) MJPEG: Up to 30/25 fps at 720 x 480 (NTSC) / 720 x 576 (PAL)
Image Settings	<ul style="list-style-type: none"> Adjustable image size, quality, and bit rate Time stamp, text caption, and frame rate overlay Flip & mirror Configurable brightness, contrast and saturation Supports privacy masks
Audio	<ul style="list-style-type: none"> Compression: <ul style="list-style-type: none"> GSM-AMR speech compression, bit rate: 4.75 kbps ~ 12.2 kbps MPEG-4 AAC audio encoding, bit rate: 16 kbps ~ 128 kbps Interface: <ul style="list-style-type: none"> Line level input: up to 1 Vrms Audio output Supports two-way audio via SIP protocol Supports audio mute
Networking	<ul style="list-style-type: none"> 10/100 Mbps Ethernet, RJ-45 Protocols: IPv4, IPv6, TCP/IP, HTTP, HTTPS, UPnP, RTSP/RTP/RTCP, IGMP, SMTP, FTP, DHCP, NTP, DNS, DDNS, PPPoE, CoS, QoS, SNMP and 802.1X
Alarm and Event Management	<ul style="list-style-type: none"> Triple-window video for motion detection Tamper detection One D/I and one D/O for external sensor and alarm Event notification using HTTP, SMTP or FTP Local recording of MP4 file
On-board Storage	<ul style="list-style-type: none"> SD/SDHC card slot Stores snapshots and video clips
Security	<ul style="list-style-type: none"> Multi-level user access with password protection IP address filtering HTTPS encrypted data transmission 802.1X port-based authentication for network protection
Users	<ul style="list-style-type: none"> Live viewing for up to 10 clients
Dimension	<ul style="list-style-type: none"> 130 mm (D) x 78.35 mm (W) x 33.85 mm (H)

Weight	<ul style="list-style-type: none"> 242 g
LED Indicator	<ul style="list-style-type: none"> System power and status indicator System activity and network link indicator
Power	<ul style="list-style-type: none"> 12V DC 24V AC Power consumption: Max. 5W 802.3af compliant Power-over-Ethernet Power output: 12V DC (420 mA)
Approvals	<ul style="list-style-type: none"> CE, LVD, FCC, VCCI, C-Tick
Operating Environments	<ul style="list-style-type: none"> Temperature: 0 ~ 55 °C (32 ~ 131 °F) Humidity: 20% ~ 80% RH
Viewing System Requirements	<ul style="list-style-type: none"> OS: Microsoft Windows 2000/XP/Vista Browser: Mozilla Firefox, Internet Explorer 6.x or above Real Player: 10.5 or above Quick Time: 6.5 or above
Installation, Management, and Maintenance	<ul style="list-style-type: none"> Installation Wizard 2 32-CH ST7501 central management software Supports firmware upgrade
Applications	<ul style="list-style-type: none"> SDK available for application development and system integration
Warranty	<ul style="list-style-type: none"> 24 months

System Overview



External View



All specifications are subject to change without notice. Copyright©2009 VIVOTEK INC. All rights reserved.

Distributed by: