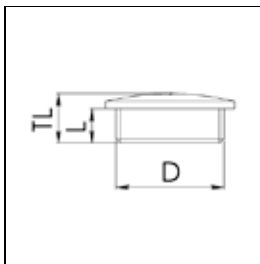


## Stop ends, metric



**Protection class to EN 60 529:** IP 54

**Material:** Brass nickel-plated

**Equipment:** For secure closing of unused threaded holes or through holes




## Verschlusschrauben, metrisch



**Schutzart gemäß EN 60 529:** IP 54




**Material:** Messing vernickelt

**Ausstattung:** Zum sicheren Verschließen von nicht benutzten Gewinde- oder Durchgangslöchern

Type	WISKA-No. Ni		 D		TL
			mm	mm	mm
EMVS 12	10063151	100	M 12x1,5	5	7,5
EMVS 16	10063152	100	M 16x1,5	5	8
EMVS 20	10063153	100	M 20x1,5	6,5	9,5
EMVS 25	10063154	100	M 25x1,5	7	11
EMVS 32	10063155	100	M 32x1,5	8	12
EMVS 40	10063156	50	M 40x1,5	8,5	13
EMVS 50	10063157	25	M 50x1,5	9	15
EMVS 63	10063158	10	M 63x1,5	10	16

## Stop ends, PG

## Verschlusschrauben, PG

Type	WISKA-No. Ni		 D		TL
			mm	mm	mm
MVS 7	10062151	100	PG 7	5	8
MVS 9	10062152	100	PG 9	6	9
MVS 11	10062153	100	PG 11	6	9
MVS 13,5	10062154	100	PG 13,5	6,5	9,5
MVS 16	10062155	100	PG 16	6,5	9,5
MVS 21	10062156	100	PG 21	7	11
MVS 29	10062157	50	PG 29	8	12
MVS 36	10062158	50	PG 36	9	15
MVS 42	10062159	25	PG 42	10	16
MVS 48	10062160	25	PG 48	10	16