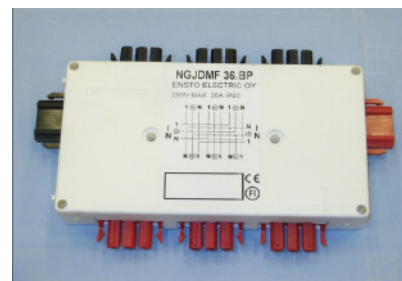
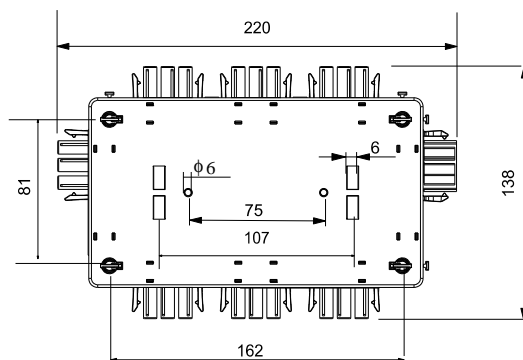
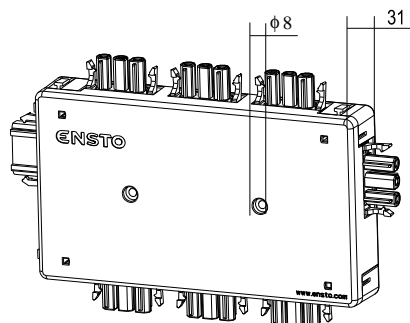




EnstoNet

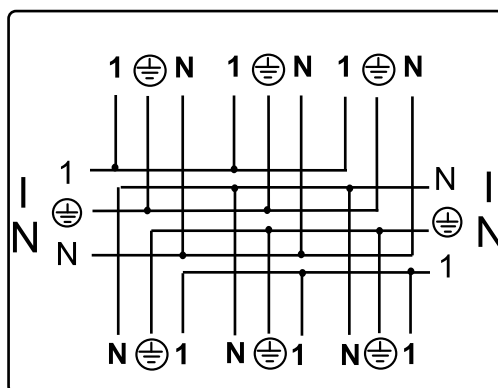
NGJDMF36.BP

250V MAX.20A IP20



Out
Connect 3 x 3-Pole Male Black

Connect
3-Pole Female Black



Connect
3-Pole Female Red

Out
Connect 3 x 3-Pole Male Red

NGJDMF36.BP

Distribution box, 2x1-phase feed, 2x3-single phase outputs. (A and C code)

With the NGJDMF36.BP distribution box, two 1-phase supplies are branched into 2x3-single phase supplies. The distribution box can be fixed e.g. to the installation plate by screws, max. \varnothing 6 mm, two holes in the middle (distance between holes 75 mm) or four holes in the corners of the box. The boxes can also be fixed with two cable ties from the clamps on the box base or by using the so-called snap-on pins, for which there are four fixing holes on the box base.

Type	NGJDMF36.BP Distribution Box
Description	2x1 phase in ,2x3-pole outputs (A and C-code)
Voltage	U=250VAC
Current	I= 20A max
IP Class	IP20
Ean Code	6418677716379
Sstl No.	
E No.	
Weight/Pcs	307g.
Pack Qty	10
Approvals	FI