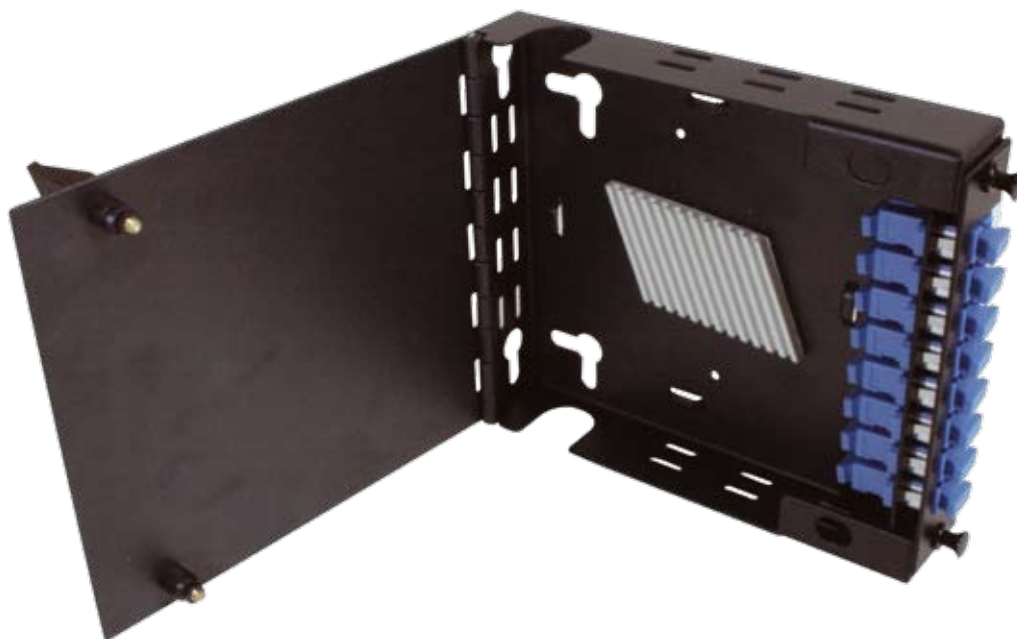


# AMW1 Wall Box with 1 LGX Slot

V.3.1



## 1 x LGX Slot

Various adaptor plates available, see overleaf

## Description

FibreFab offers a wide range of indoor wall mounted splice enclosures the AMW1 enclosure offers a compact solution to the end user. This enclosure has been designed to accept up to 1 LGX style assemblies.

With the ability to use a full array of adapter types this enclosure offers a flexible solution to the end user, enabling them to incorporate a multi functional enclosure that allows easy access during installation or re-work with no disturbance of the existing cable or fibres.

In the addition to the array of adaptors the enclosure also offers multiple cable entry solutions, fibre cable can be spliced or pre terminated solutions, making this enclosure one of the most flexible on the market.

## Features/Benefits

- ▶ Up to 1 LGX components
- ▶ Wall mountable
- ▶ Multiple adapter options available
- ▶ Splicing option available
- ▶ Multiple fixing points
- ▶ Hinged door
- ▶ Accepts loose tube and distribution cable
- ▶ ROHS, REACH SvHC

## Applications

- ▶ Data centres, premise installations, telecommunication networks
- ▶ Ethernet, Fibre Channel, ATM, LAN, MAN and WAN
- ▶ Data communication and telecommunication networks
- ▶ Indoor applications

## Technical Specification

1 Slot Wall Box	
Height	140mm
Width	161mm
Depth	32mm
Net weight	0.6kg
Packaged weight	0.7kg
Packaged dimensions	180mm (W) x 180mm (L) x 55mm (H)
Suitable for Adaptor type	LGX / MTP Cassettes
Number of module positions	1
Material	Cold- rolled steel
Material thickness	1.2mm
Material finish	Powder coating
Colour	RAL 9004
Operating temperature	-40°C to +50°C
Designed in accordance with	TIA/EIA 568.C, ISO/IEC 11801, EN50173, IEC60304, IEC61754, EN297-1
Compliant to	RoHS, Reach/SVHC

## Ordering Information

DESCRIPTION	PART NO.
AM Style Wall Box	AMW1

For a full range of LGX style connector modules, see overleaf



+44 (0) 870 127 3330



+44 (0) 870 127 3331



sales@fibrefab.com

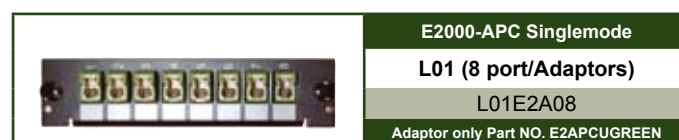
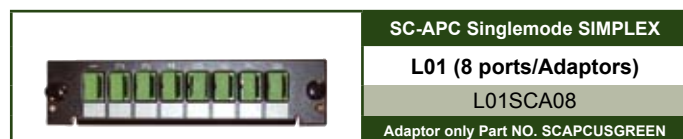


www.fibrefab.com

## AMW1 Wall Box with 1 LGX Slot

V.3.1

### LGX Style Adaptor Plates



+44 (0) 870 127 3330



+44 (0) 870 127 3331



sales@fibrefab.com



www.fibrefab.com