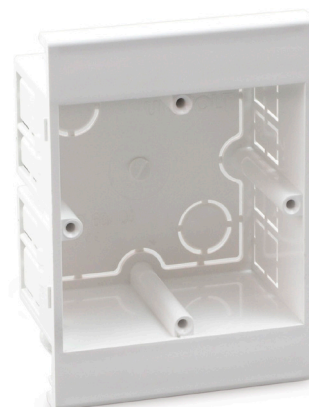


Data sheet

ID	MAGD WH
Description	outlet box
Properties	single gang, without integrated cover joints for clip-on mounting on maxi trunking profile, with four lugs for fixing of devices with self-tapping screw Ø 2.9 x 13 mm, with knock-out bottom and cable entries
Colour	white, similar to RAL 9010



Art. no.	Dimensions	Number of units	Small Package	Large Package
033 260		1	20 pc	-
033 261		1	15 pc	-

Further technical details

Details

Mounting method box	Front
Model	Open
Mounting method installation unit	Screwing
Strain relief possibility	False
With connection space	True
Material	PVC-U