



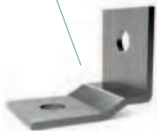
I8 + SHV + BI8



SHV



I8



BI8

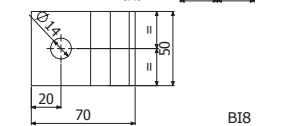
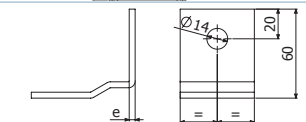
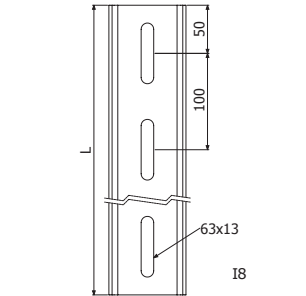
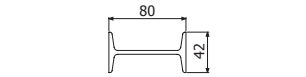
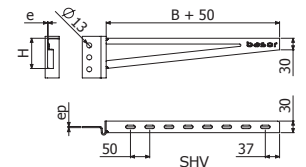
	L		BRD P	e	ep	H		CTA		GC	
	mm	inch				n	mm	mm	mm	inch	kg
I8 600	600	24"	3	-	-	-	-	-	-	2/6345	3,49
I8 1000	1000	40"	3	-	-	-	-	-	-	2/6346	5,81
I8 1300	1300	51" 1/6	4	-	-	-	-	-	-	2/6347	6,55
I8 1500	1500	59"	5	-	-	-	-	-	-	2/6348	7,55
I8 2000	2000	78" 3/4	6	-	-	-	-	-	-	2/6349	11,62
I8 3000	3000	118" 1/9	8	-	-	-	-	-	-	2/6350	17,43
SHV 200	200	8"	-	2,5	3	58	2 2/7	200	441	2/6058	0,99
SHV 300	300	12"	-	2,5	3	68	2 2/3	200	441	2/6271	1,28
SHV 400	400	16"	-	2,5	3	79	3 1/9	200	441	2/6259	1,58
SHV 500	500	20"	-	2,5	3	89	3 1/2	200	441	2/6057	1,88
SHV 600	600	24"	-	2,5	3	100	4	200	441	2/6275	2,17
SHV 700	700	28"	-	2,5	3	110	4 1/3	200	441	2/6276	2,47
SHV 800	800	32"	-	2,5	3	120	4 5/7	200	441	2/6277	2,77
BI8	-	-	-	-	-	-	-	-	-	2/6342	0,19

SHV + 2 x DIN 933 M10x30 (0/0320) + 2 x DIN 934 M10 (0/0343)

B1 (2/4356-EZ / 2/6826-GC)

CTBF (2/4362-EZ / 2/7132-GC)

BFE (2/0863-GC) + B2 (2/6792-GC)



BASORSUPPORT

KS



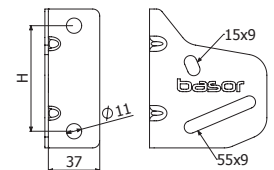
KS



KS + SCR

	H		GS		GC		i
	mm	inch	REF.	kg/ud	REF.	kg/ud	
KS 50_400	76	3"	2/7211	0,22	2/7215	0,23	304
KS 500_750	94	3 5/7"	2/6289	0,43	2/5881	0,44	4

SCR / SRB + 2/100 B2 (2/6792-GC / 2/4926-EZ)



KSR + C-SR



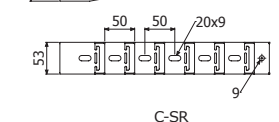
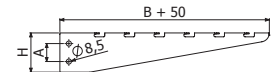
KSR+C-SR



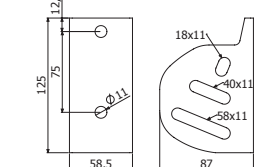
KSR

	B		e	H		A		CTA		GC		i
	mm	inch		mm	mm	mm	inch	kg	lb	REF.	kg/ud	
C-SR 200	200	8"	1,5	67	2 2/3"	30	1 1/6"	102	225	2/3460	0,61	304
C-SR 300	300	12"	1,5	67	2 2/3"	30	1 1/6"	90	198	2/1032	0,83	4
C-SR 400	400	16"	1,5	100	4"	60	2 1/3"	159	351	2/1033	1,22	3
C-SR 500	500	20"	1,5	100	4"	60	2 1/3"	134	295	2/1034	1,48	1
C-SR 600	600	24"	1,5	100	4"	60	2 1/3"	117	258	2/1035	1,84	6
KSR	-	-	2	-	-	-	-	-	-	2/6828	0,35	

KSR → 1 x CT2 M8X75 (2/6793) + 2/100 B2 (2/6792-GC)



C-SR



KSR