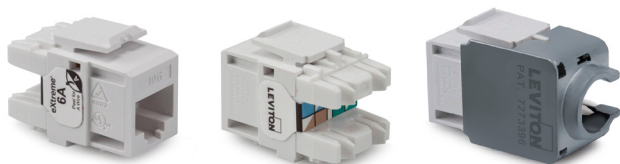


eXtreme® Cat 6A Channel-Rated QuickPort® Jack

APPLICATION

The eXtreme Cat 6A Channel-Rated QuickPort Jack exceeds all channel performance requirements in ANSI/TIA-568.2-D (Cat 6A) and ISO/IEC 11801-1 (Class E_A) from 1 MHz to 500 MHz to support the IEEE 802.3an standard for 10 Gigabit Ethernet over UTP Cable. The jack is designed to be used with all QuickPort compatible products and features patented injection-molded Cone of Silence® covers to eliminate alien crosstalk (AXT). The jack includes patented Retention Force Technology™ to promote consistent network performance over the life of the system. Unique Pair Separation Towers facilitate quick, easy terminations. The jack is configured in a 180-degree configuration such that the punch down field is in the back, allowing for rear termination.



FEATURES

- Cat 6A/Class E_A Channel Performance
- Patented RFT protects against time damage from 4- or 6-pin plugs
- Alien crosstalk suppressed by Cone of Silence, metalized body, and new printed circuit board
- Pair Separation Tower (PST) design facilitates separation of Cat 6A conductors
- Patented, dual-layer wiring label simplifies punchdown and reduces rework

DESIGN CONSIDERATIONS

- Use in any QuickPort housing to support Cat 6A UTP connectivity in surface-mount, flush-mount, or modular-furniture outlets and field-configurable panels
- Can be used in conjunction with other QuickPort snap-in modules for voice/data/video applications over UTP, coax, fiber
- To identify ports, use different colored modules for each application (full selection of ANSI/TIA-606-C compatible colors - 13 available)

COUNTRY OF ORIGIN

USA

SPECIFICATION

The jack shall meet or exceed the requirements for Category 6A channel-level performance described in ANSI/TIA-568.2-D, as well as Class E_A requirements as described in ISO/IEC 11801-1. The modular jack shall be snap-in style. The jack shall also be in compliance with all National Electrical codes; compliant with ANSI/TIA-1096-A; UL Listed; and independently verified. In addition to Cat 6A compliance, the jack shall have the ability to support high-megabit and shared-sheath applications. All plastics used in construction of jack bodies shall be fire retardant with a UL flammability rating of 94V-0. All terminations shall use 110-type insulation displacement jacks (IDC). The jack shall provide a ledge directly adjacent to the 110-style termination against which wires can be directly terminated and cut in one action by the installation craftsman. Jack wiring is universal and will accommodate installation color codes for T568A and T568B wiring schemes. The termination field shall be in the rear for easy access. The jack shall include an alien crosstalk attenuation cover (Cone of Silence) to protect the termination field from induced noise from adjacent jacks. The modular jack shall fit all other installed telecommunications wallplates, outlets, field-configurable patch panels, and patch blocks. The jack shall be available in 13 ANSI/TIA-606-C compatible colors.

STANDARDS COMPLIANCE

- ANSI/TIA-568.2-D (Cat 6A)
- ISO/IEC 11801-1 (Class E_A)
- IEEE 802.3an 10GBASE-T
- cULus Listed
- ANSI/TIA-1096-A (formerly FCC Part 68)
- PoE standards: IEEE 802.3af, 802.3at, 802.3bt, Cisco UPoE, and Power over HDBaseT™ (PoH) up to 100 watts
- UL 2043 Plenum Certified

PHYSICAL SPECIFICATIONS

Dimensions: See page two

Materials: **Jack Body:** High-impact, fire-retardant plastic rated UL 94V-0

Spring Wire Contacts: High-quality, copper-based alloy, plated with 50 micro-inches of gold for lowest contact resistance and maximum life

Environmental

Conditions: **Storage Temperature:** -40 °C to +70 °C
Operating Temperature: -10 °C to +60 °C

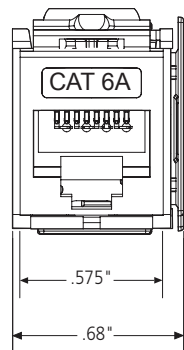
WARRANTY INFORMATION

Limited product and limited extended warranties are rendered VOID if the installed structured cabling system is used for Power over Ethernet applications that exceed the product's specified power rating.

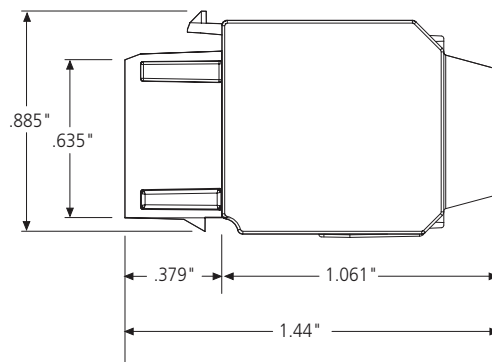
For a copy of Leviton product warranties, visit www.leviton.com/warranty.

ELECTRONIC FILES

For CAD files, typical specs, or technical drawings (.DXF, .DWG), visit www.leviton.com.



Jack with Cone of Silence
Front View



Jack with Cone of Silence
Side View

6110G-R*6

PART NUMBERS

Description	Part No.	GreenPack® 12-Pack
eXtreme® Cat 6A Channel-Rated QuickPort® Jack, white	6110G-RW6	6110G-CW6
eXtreme Cat 6A Channel-Rated QuickPort Jack, light almond	6110G-RT6	—
eXtreme Cat 6A Channel-Rated QuickPort Jack, ivory	6110G-RI6	—
eXtreme Cat 6A Channel-Rated QuickPort Jack, yellow	6110G-RY6	—
eXtreme Cat 6A Channel-Rated QuickPort Jack, orange	6110G-RO6	—
eXtreme Cat 6A Channel-Rated QuickPort Jack, crimson	6110G-RC6	—
eXtreme Cat 6A Channel-Rated QuickPort Jack, dark red	6110G-RR6	—
eXtreme Cat 6A Channel-Rated QuickPort Jack, purple	6110G-RP6	—
eXtreme Cat 6A Channel-Rated QuickPort Jack, blue	6110G-RL6	6110G-CL6
eXtreme Cat 6A Channel-Rated QuickPort Jack, green	6110G-RV6	—
eXtreme Cat 6A Channel-Rated QuickPort Jack, gray	6110G-RG6	—
eXtreme Cat 6A Channel-Rated QuickPort Jack, black	6110G-RE6	6110G-CE6
eXtreme Cat 6A Channel-Rated QuickPort Jack, brown	6110G-RB6	—

