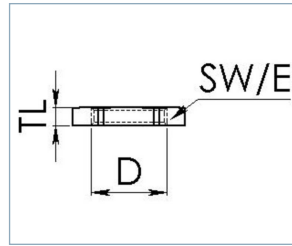


**Locknuts, GM, metric, DIN 89280**



GM



**Material Advice**

Brass  
\*Similar to DIN 89284

Type	WISKA-No. blank	WISKA-No. Ni	WISKA-No. Cr			TL (mm)	
GM 16	50013662	10011606	10014237	M 16x1,5	22	4	1
GM 18	50011419	10012963	10011533	M 18x1,5	22	4	1
GM 24	50011420	10013175	10011532	M 24x1,5	30	5	1
GM 30	50011421	10012814	10011531	M 30x2	36	6	1
GM 36	50011422	10012815	10011530	M 36x2	41	7	1
GM 45	50011423	10011559	10011529	M 45x2	55	8	1
GM 56	50011424	10011557	10011528	M 56x2	65	9	1
GM 72	50011425	30070555	10012075	M 72x2	85	10	1
GM 80*	50011426	10014199	10011858	M 80x2	90	11	1
GM 105*	50011427	10011708	10103708	M 105x2	120	14	1

- CABLE GLANDS
- POLYAMIDE
- METALLIC
- MARITIME
- EMC
- EX E/I
- EX D
- RAILWAY
- VENTING
- BRITISH STANDARD
- SEALINGS
- GROMMET'S MEMBRANE
- CABLE ENTRIES
- CABLE ENTRY SYSTEM
- CONMAXX
- CONMAXX GLAND
- CABLE PROTECTION
- BRACE FITTING NON-METALLIC
- BRACE CONDUIT NON-METALLIC
- BRACE FITTING METALLIC
- BRACE CONDUIT METALLIC
- BRACE SLEEVE