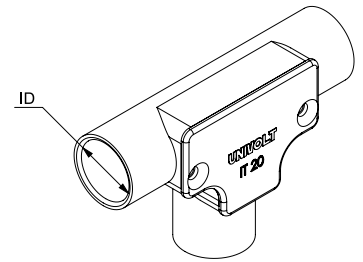
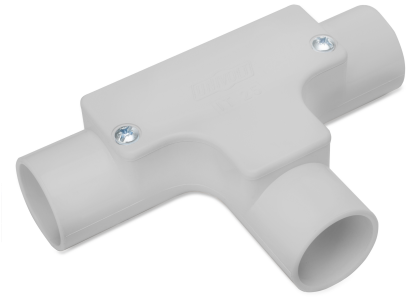


Data sheet

ID	HFIT LG
Description	inspection junction, halogen-free
Properties	for the connection of rigid conduits, especially for enclosed installations
Colour	light gray, similar to RAL 7035



Working temperature
 -25 to +90 °C

Art. no.	For tube diameter	ps	pl
082 561	20 mm	50 pc	400 pc
082 562	25 mm	20 pc	160 pc

Further technical details

Details	
Halogen free	True
Model	Plug-in
Material	PC-Blend