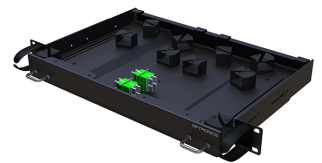
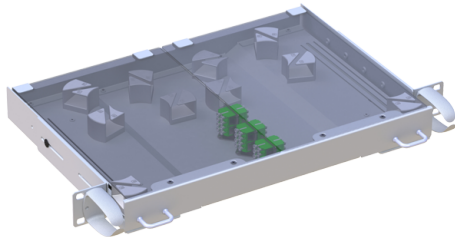


S30 Sliding Patch only Panel



An innovative solution for the connection and storage of interconnect cabling. The patch only panel uses bend radius mandrels to ensure the correct bend radius is maintained at all times. The internal adapter field offers the ability to patch up to 24 x LC , 12 x SC simplex or 12 x E2000 connections, whilst enclosing the patching field within the panel offers added security against accidental disconnection to the customer or network.

FEATURES/BENEFITS

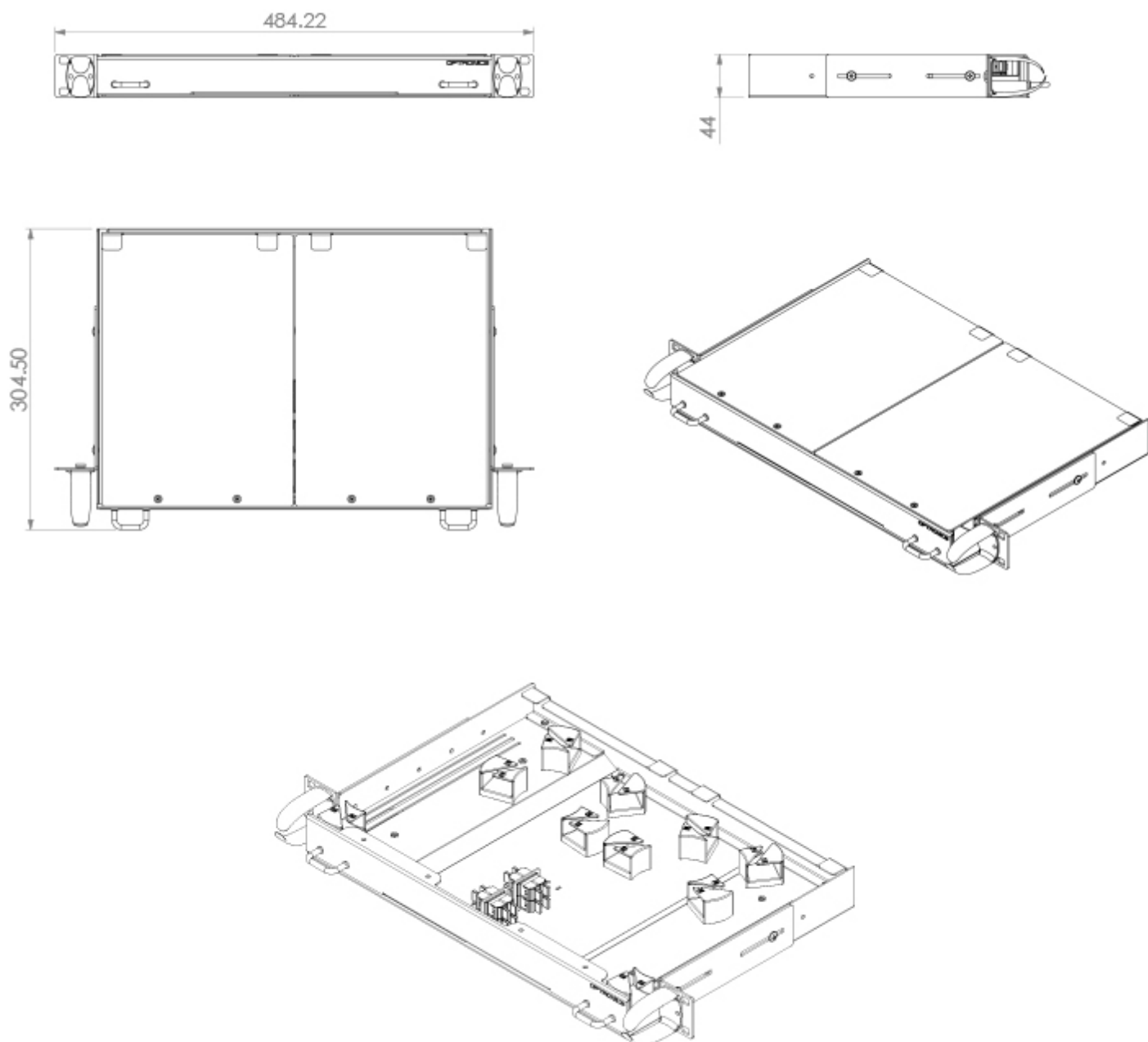
- 24 x LC, 12 x SC Simplex or 12 x E2000 connections (flangeless only)
- Fully integrated fiber management
- 30mm bend radius maintained throughout
- Internal patching field
- Slack storage area
- 19" Rack mountable
- RoHS, REACH and SvHC

APPLICATIONS

- Cross connect
- Inter connect
- Telecom CPE
- Ethernet, Fiber Channel, ATM, LAN, MAN and WAN
- Data communication ODF and distribution
- Indoor and outdoor applications

SPECIFICATIONS

DESCRIPTION	
Height	1U
Width	484mm
Depth	306.5mm
Suitable for adapter type (flangeless only)	SC Simplex, E2000 Simplex and LC Quad (Fiberfab design only)
Number of adapter positions	12 x SC SX, E2000 6 x LC Quad
Material	Cold-rolled steel
Material thickness	1.5mm
Material coating	Powder coating
Colour	Grey RAL7035
Operating temperature	-40°C to +60°C
Compliant to	RoHS, Reach/SVHC
Designed in accordance with	TIA/EIA 568.C, ISO/IEC 11801, EN50173, IEC60304, IEC61754,



ORDERING INFORMATION

Code	Fiber Type		Code	Fiber Count		Code	Adaptor/Connector 1		Code
F	S	SM Adaptors	PE	12	12F	DXX	A	LC	X-30AD
	M	MM Adaptors		24	24F (LC Duplex)		B	LCA	
							D	SC	
							E	SCA	
							L	E2	
							M	E2A	

PART NUMBER	DESCRIPTION	LEGACY PART NUMBER
FSPE24DXBX-30AD	Sliding Panel Black 1U Patch Only 12 Port (SCS/LCD) 24F LCA SM (Adaptors)	S30LQA06
FMPE24DXAX-30AD	Sliding Panel Black 1U Patch Only 12 Port (SCS/LCD) 24F LC MM (Adaptors)	S30LQM06
FSPE24DXAX-30AD	Sliding Panel Black 1U Patch Only 12 Port (SCS/LCD) 24F LC SM (Adaptors)	S30LQS06
FSPE12DXEX-30AD	Sliding Panel Black 1U Patch Only 12 Port (SCS/LCD) 12F SCA SM (Adaptors)	S30SCA12
FMPE12DXDX-30AD	Sliding Panel Black 1U Patch Only 12 Port (SCS/LCD) 12F SC MM (Adaptors)	S30SCM12
FSPE12DXDX-30AD	Sliding Panel Black 1U Patch Only 12 Port (SCS/LCD) 12F SC SM (Adaptors)	S30SCS12
FSPE12DXMX-30AD	Sliding Panel Black 1U Patch Only 12 Port (SCS/LCD) 12F E2A SM (Adaptors)	S30E2A12
FMPE12DXLX-30AD	Sliding Panel Black 1U Patch Only 12 Port (SCS/LCD) 12F E2 MM (Adaptors)	S30E2M12
FSPE12DXLX-30AD	Sliding Panel Black 1U Patch Only 12 Port (SCS/LCD) 12F E2 SM (Adaptors)	S30E2S12



SCAN QR FOR PRODUCT PAGE

FURTHER INFORMATION

- For additional information please contact your sales representative
- To view the product 360 visit the product page (Scan the QR code or visit the link below)
- Downloaded from <https://www.aflhyperscale.com/product/s30-sliding-patch-only-panel>
- AFL Hyperscale reserves the right to make changes in this datasheet at any time without notice
- Information in this document is correct as of September 16, 2019

Europe

+44 (0) 1908 441 144
emeasales@aflhyperscale.com
© AFL Hyperscale 2019

Americas

+1 866 814 8615
usasales@aflhyperscale.com

Middle East & Africa

+971 4 404 9606
mesales@aflhyperscale.com

India

+91 80 46874687
indiasales@aflhyperscale.com

Asia Pacific

+86 755 2561 3694
apacsales@aflhyperscale.com