
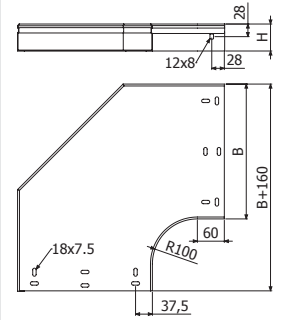




**CPERC**

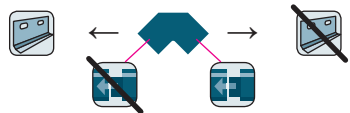
	B		H		GS		GC		i304	
	mm	inch	mm	inch	REF.	kg/ud	REF.	kg/ud	REF.	kg/ud
	100	4"	35	1 3/8"	2/1337	0,59	2/1368	0,67	-	-
CPERC 150x35	150	6"	35	1 3/8"	2/1338	0,75	2/1369	0,86	-	-
CPERC 200x35	200	8"	35	1 3/8"	2/1339	1,00	2/1370	1,15	-	-
CPERC 300x35	300	12"	35	1 3/8"	2/1340	1,61	2/1371	1,84	-	-
CPERC 100x60	100	4"	60	2 3/8"	2/1344	0,70	2/1375	0,79	2/4777	0,70
CPERC 150x60	150	6"	60	2 3/8"	2/1345	0,88	2/1376	1,00	2/5317	0,88
CPERC 200x60	200	8"	60	2 3/8"	2/1346	1,14	2/1377	1,30	2/4778	1,14
CPERC 300x60	300	12"	60	2 3/8"	2/1348	1,77	2/1379	2,02	2/6180	1,77
CPERC 400x60	400	16"	60	2 3/8"	2/1349	2,53	2/1380	2,89	2/7390	2,53
CPERC 500x60	500	20"	60	2 3/8"	2/1350	3,42	2/1381	3,90	-	-
CPERC 600x60	600	24"	60	2 3/8"	2/1351	4,44	2/1382	5,06	2/7391	4,44
CPERC 100x80	100	4"	80	3 1/7"	2/1352	0,96	2/1383	1,09	-	-
CPERC 150x80	150	6"	80	3 1/7"	2/1353	1,23	2/1384	1,41	-	-
CPERC 200x80	200	8"	80	3 1/7"	2/1354	1,54	2/1385	1,76	-	-
CPERC 300x80	300	12"	80	3 1/7"	2/1356	2,29	2/1387	2,61	-	-
CPERC 400x80	400	16"	80	3 1/7"	2/1357	3,18	2/1388	3,63	-	-
CPERC 500x80	500	20"	80	3 1/7"	2/1358	4,24	2/1389	4,83	-	-
CPERC 600x80	600	24"	80	3 1/7"	2/1359	5,45	2/1390	6,21	-	-
CPERC 100x100	100	4"	100	4"	2/1360	1,05	2/1391	1,20	-	-
CPERC 150x100	150	6"	100	4"	2/1361	1,33	2/1392	1,52	-	-
CPERC 200x100	200	8"	100	4"	2/1362	1,65	2/1393	1,88	-	-
CPERC 300x100	300	12"	100	4"	2/1364	2,42	2/1395	2,76	-	-
CPERC 400x100	400	16"	100	4"	2/1365	3,34	2/1396	3,80	-	-
CPERC 500x100	500	20"	100	4"	2/1366	4,41	2/1397	5,03	-	-
CPERC 600x100	600	24"	100	4"	2/1367	5,64	2/1398	6,44	-	-




i 3 1 6

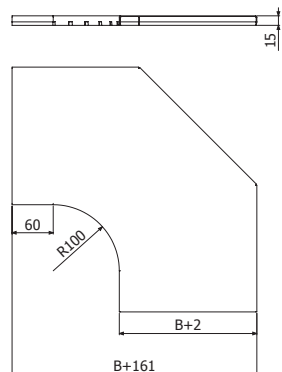


2 x JUER



**TCPERC**

	B		GS		GC		i304	
	mm	inch	REF.	kg/ud	REF.	kg/ud	REF.	kg/m
	100	4"	2/1430	0,27	2/1437	0,31	2/3560	0,27
TCPERC 150	150	6"	2/1431	0,41	2/1438	0,48	2/3561	0,41
TCPERC 200	200	8"	2/1432	0,57	2/1439	0,67	2/3562	0,57
TCPERC 300	300	12"	2/1433	0,97	2/1440	1,13	2/3563	0,97
TCPERC 400	400	16"	2/1434	1,46	2/1441	1,71	2/4752	1,46
TCPERC 500	500	20"	2/1435	2,04	2/1442	2,39	2/3564	2,09
TCPERC 600	600	24"	2/1436	2,71	2/1443	3,17	2/4753	2,71



i 3 1 6

