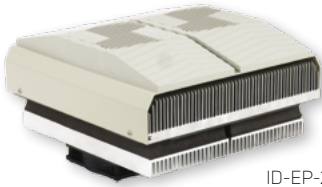
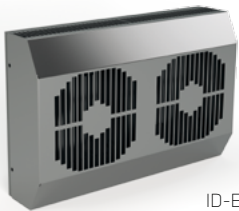


THERMOELECTRIC COOLER



ID-EP-20-1

- Material: plastic parts in PC/ABS alloy. All parts self-extinguishing, according to UL 94V-0
- Color: RAL 7035 and RAL 7032
- Degree of protection: IP55
- Electrical connection: by 4 pole Cage Clamp® connector
- Sealing: permanent sealing gasket in a closed cell foam made of polyethylene
- Regulation: ID EP-REG, for more information, please contact our technical support
- Package includes: thermoelectric cooling unit ready for connection



ID-EP-10X-1

- Material: stainless steel housing
- Degree of protection: IP66
- Sealing: permanent sealing gasket in closed cell foam made of polyethylene
- Connection via a terminal block
- Regulation: for more information, please contact our technical support
- Package includes: thermoelectric cooling unit ready for connection



ID-PS-120-41

THERMOELECTRIC COOLER, COOLING POWER 200 W

Code		ID-EP-20-1
Dimensions (mm)	H	320
	W	310
	D	188 (100 mm outside of the cabinet)
Cooling power		200 W
Heating power		200 W
Voltage		24 V DC
Rated voltage range		17-27 V DC
Rated current		9,2 A
Max current		11,1 A
Rated Temp. Range		-20 °C / +70 °C
Weight		12 kg
Regulator		ID-EP-REG
Power supply		ID-PS-240-41

THERMOELECTRIC COOLER, COOLING POWER 100 W

Code		ID-EP-10X-1
Dimensions (mm)	H	200
	W	304
	D	138 (73,9 mm outside of the cabinet)
Cooling power		100 W
Heating power		100 W
Voltage		24 V DC
Rated voltage range		17-27 V DC
Rated current		4,8 A
Max current		7,4 A
Rated Temp. Range		-20 °C / +65 °C
Weight		5,9 kg
Power supply		ID-PS-120-41

POWER SUPPLIES FOR THERMOELECTRIC UNITS

Code		ID-PS-240-41	ID-PS-120-41
Dimensions (mm)	H	125	125
	W	60	60
	D	140	113
Power		240 W	120 W
Input Voltage		110-240 VAC 90 - 350 VDC	110-240 VAC 90 - 350 VDC
Output Voltage		24 V DC	24 V DC
Current		10 A	5 A
Weight		0,9 kg	0,62 kg
Mounting position		DIN rail	DIN rail
Rated Temp. Range		-40 °C / +70 °C	-40 °C / +70 °C



CONTROL CABINET -
FOOTBALL WORLD CHAMPIONSHIP 2018