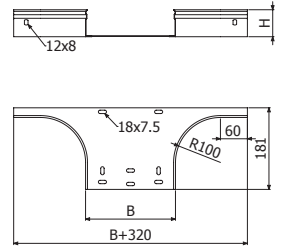




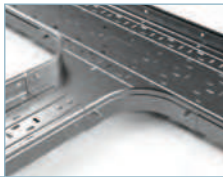
AS



| | B | | H | | GS | | GC | |
|------------|-----|------|-----|--------|--------|-------|--------|-------|
| | mm | inch | mm | inch | REF. | kg/ud | REF. | kg/ud |
| AS 100x35 | 100 | 4" | 35 | 1 3/8" | 2/1983 | 0,40 | 2/2015 | 0,46 |
| AS 150x35 | 150 | 6" | 35 | 1 3/8" | 2/1984 | 0,47 | 2/2016 | 0,54 |
| AS 200x35 | 200 | 8" | 35 | 1 3/8" | 2/1985 | 0,54 | 2/2017 | 0,62 |
| AS 300x35 | 300 | 12" | 35 | 1 3/8" | 2/1987 | 0,68 | 2/2019 | 0,78 |
| AS 100x60 | 100 | 4" | 60 | 2 3/8" | 2/1991 | 0,48 | 2/2023 | 0,55 |
| AS 150x60 | 150 | 6" | 60 | 2 3/8" | 2/1992 | 0,55 | 2/2024 | 0,63 |
| AS 200x60 | 200 | 8" | 60 | 2 3/8" | 2/1993 | 0,63 | 2/2025 | 0,72 |
| AS 300x60 | 300 | 12" | 60 | 2 3/8" | 2/1995 | 0,77 | 2/2027 | 0,87 |
| AS 400x60 | 400 | 16" | 60 | 2 3/8" | 2/1996 | 0,91 | 2/2028 | 1,04 |
| AS 500x60 | 500 | 20" | 60 | 2 3/8" | 2/1997 | 1,05 | 2/2029 | 1,20 |
| AS 600x60 | 600 | 24" | 60 | 2 3/8" | 2/1998 | 1,19 | 2/2030 | 1,36 |
| AS 100x80 | 100 | 4" | 80 | 3 1/7" | 2/1999 | 0,55 | 2/2031 | 0,63 |
| AS 150x80 | 150 | 6" | 80 | 3 1/7" | 2/2000 | 0,62 | 2/2032 | 0,71 |
| AS 200x80 | 200 | 8" | 80 | 3 1/7" | 2/2001 | 0,69 | 2/2033 | 0,79 |
| AS 300x80 | 300 | 12" | 80 | 3 1/7" | 2/2003 | 0,83 | 2/2035 | 0,95 |
| AS 400x80 | 400 | 16" | 80 | 3 1/7" | 2/2004 | 0,97 | 2/2036 | 1,11 |
| AS 500x80 | 500 | 20" | 80 | 3 1/7" | 2/2005 | 1,11 | 2/2037 | 1,27 |
| AS 600x80 | 600 | 24" | 80 | 3 1/7" | 2/2006 | 1,25 | 2/2038 | 1,44 |
| AS 100x100 | 100 | 4" | 100 | 4" | 2/2007 | 0,61 | 2/2039 | 0,71 |
| AS 150x100 | 150 | 6" | 100 | 4" | 2/2008 | 0,69 | 2/2040 | 0,79 |
| AS 200x100 | 200 | 8" | 100 | 4" | 2/2009 | 0,76 | 2/2041 | 0,86 |
| AS 300x100 | 300 | 12" | 100 | 4" | 2/2011 | 0,90 | 2/2043 | 1,03 |
| AS 400x100 | 400 | 16" | 100 | 4" | 2/2012 | 1,04 | 2/2044 | 1,19 |
| AS 500x100 | 500 | 20" | 100 | 4" | 2/2013 | 1,18 | 2/2045 | 1,35 |
| AS 600x100 | 600 | 24" | 100 | 4" | 2/2014 | 1,32 | 2/2046 | 1,52 |



i 304 / i 316



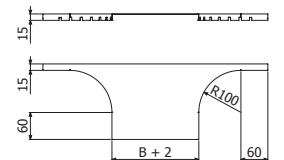
2 x JUER



TAS



| | B | | GS | | GC | |
|---------|-----|------|--------|-------|--------|-------|
| | mm | inch | REF. | kg/ud | REF. | kg/ud |
| TAS 100 | 100 | 4" | 2/8325 | 0,22 | 2/8332 | 0,26 |
| TAS 150 | 150 | 6" | 2/8326 | 0,27 | 2/8333 | 0,31 |
| TAS 200 | 200 | 8" | 2/8327 | 0,33 | 2/8334 | 0,38 |
| TAS 300 | 300 | 12" | 2/8328 | 0,44 | 2/8335 | 0,51 |
| TAS 400 | 400 | 16" | 2/8329 | 0,55 | 2/8336 | 0,63 |
| TAS 500 | 500 | 20" | 2/8330 | 0,66 | 2/8337 | 0,76 |
| TAS 600 | 600 | 24" | 2/8331 | 0,77 | 2/8338 | 0,88 |



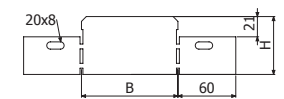
i 304 / i 316



REER



| | B | | H | | GS | | GC | | i304 | |
|--------------|-----|------|-----|--------|--------|-------|--------|-------|--------|------|
| | mm | inch | mm | inch | REF. | kg/ud | REF. | kg/ud | REF. | kg/m |
| REER 50x35 | 50 | 2" | 35 | 1 3/8" | 2/6290 | 0,03 | 2/6298 | 0,03 | - | 0,03 |
| REER 50x60 | 50 | 2" | 60 | 2 3/8" | 2/6291 | 0,04 | 2/6299 | 0,05 | 2/8767 | 0,04 |
| REER 50x80 | 50 | 2" | 80 | 3 1/7" | 2/6292 | 0,06 | 2/6300 | 0,07 | - | 0,06 |
| REER 50x100 | 50 | 2" | 100 | 4" | 2/6293 | 0,08 | 2/6301 | 0,09 | - | 0,08 |
| REER 100x35 | 100 | 4" | 35 | 1 3/8" | 2/6294 | 0,04 | 2/6302 | 0,04 | - | 0,04 |
| REER 100x60 | 100 | 4" | 60 | 2 3/8" | 2/6295 | 0,06 | 2/6303 | 0,07 | 2/8768 | 0,06 |
| REER 100x80 | 100 | 4" | 80 | 3 1/7" | 2/6296 | 0,08 | 2/6304 | 0,09 | - | 0,08 |
| REER 100x100 | 100 | 4" | 100 | 4" | 2/6297 | 0,11 | 2/6305 | 0,12 | - | 0,11 |



i 304 / i 316



2/100 x B1 (2/4356 - EZ // 2/6826 - GC // 2/4925 - i304)

