



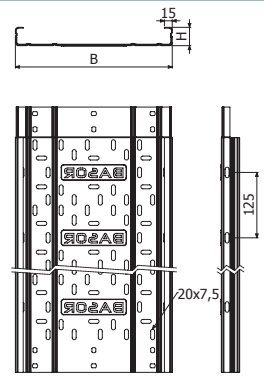
FRE H35



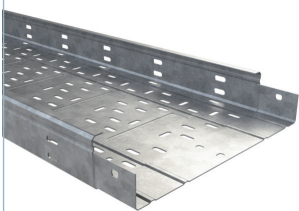
L = 3 m (10 ft)

	B		H		e	GS		GC	
	mm	inch	mm	inch		REF.	kg/m	REF.	kg/m
FRE 100X35	100	4"	35	1 3/8"	1,5	2/0001	1,68	2/0051	1,88
FRE 150X35	150	6"	35	1 3/8"	1,5	2/0002	2,15	2/0052	2,41
FRE 200X35	200	8"	35	1 3/8"	1,5	2/0003	2,51	2/0053	2,81
FRE 300X35	300	12"	35	1 3/8"	1,5	2/0004	3,35	2/0054	3,75

4/100 x B1 (6/100xB1 → 300x35) (2/4356 - EZ // 2/6826 - GC // 2/4925 - i304).



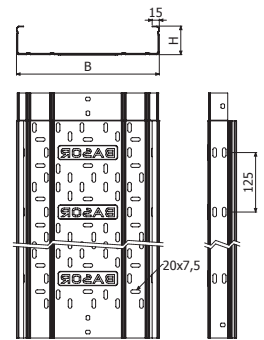
FRE H60



L = 3 m (10 ft)

	B		H		e	GS		GC	
	mm	inch	mm	inch		REF.	kg/m	REF.	kg/m
FRE 100X60	100	4"	60	2 3/8"	1,5	2/0006	2,15	2/0056	2,41
FRE 150X60	150	6"	60	2 3/8"	1,5	2/0007	2,62	2/0057	2,94
FRE 200X60	200	8"	60	2 3/8"	1,5	2/0008	2,99	2/0058	3,34
FRE 300X60	300	12"	60	2 3/8"	1,5	2/0009	3,82	2/0059	4,28
FRE 400X60	400	16"	60	2 3/8"	1,5	2/0010	4,66	2/0060	5,22
FRE 500X60	500	20"	60	2 3/8"	1,5	2/0011	5,49	2/0061	6,15
FRE 600X60	600	24"	60	2 3/8"	1,5	2/0012	6,33	2/0062	7,09

4/100 x B1 (2/4356 - EZ // 2/6826 - GC // 2/4925 - i304).



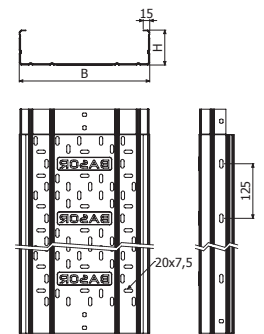
FRE H80



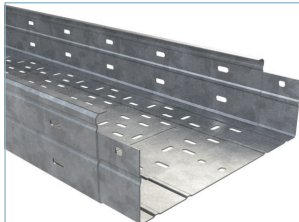
L = 3 m (10 ft)

	B		H		e	GS		GC	
	mm	inch	mm	inch		REF.	kg/m	REF.	kg/m
FRE 100X80	100	4"	80	3 1/7"	1,5	2/0013	2,53	2/0063	2,83
FRE 150X80	150	6"	80	3 1/7"	1,5	2/0014	3,00	2/0064	3,36
FRE 200X80	200	8"	80	3 1/7"	1,5	2/0015	3,36	2/0065	3,77
FRE 300X80	300	12"	80	3 1/7"	1,5	2/0016	4,20	2/0066	4,70
FRE 400X80	400	16"	80	3 1/7"	1,5	2/0017	5,04	2/0067	5,64
FRE 500X80	500	20"	80	3 1/7"	1,5	2/0018	5,87	2/0068	6,58
FRE 600X80	600	24"	80	3 1/7"	1,5	2/0019	6,71	2/0069	7,51

4/100 x B1 (2/4356 - EZ // 2/6826 - GC // 2/4925 - i304).



FRE H100



L = 3 m (10 ft)

	B		H		e	GS		GC	
	mm	inch	mm	inch		REF.	kg/m	REF.	kg/m
FRE 100X100	100	4"	100	4"	1,5			2/4556	3,39
FRE 150X100	150	6"	100	4"	1,5	2/0020	3,38	2/0070	3,78
FRE 200X100	200	8"	100	4"	1,5	2/0021	3,74	2/0071	4,19
FRE 300X100	300	12"	100	4"	1,5	2/0022	4,58	2/0072	5,13
FRE 400X100	400	16"	100	4"	1,5	2/0023	5,41	2/0073	6,06
FRE 500X100	500	20"	100	4"	1,5	2/0024	6,25	2/0074	7,00
FRE 600X100	600	24"	100	4"	1,5	2/0025	7,09	2/0075	7,94

4/100 x B1 (2/4356 - EZ // 2/6826 - GC // 2/4925 - i304).

